

# **G** IANTYRE

*Hold your future*





# **G**IANTYRE

*Hold your future*

We have passed the national CCC certification, ISO /TS16949 international quality system certification, DOT certification (U.S. Department of Transportation), ECE certification (Economic Commission for Europe), and Brazil INMETRO certification etc. Our laboratories have been certified by the CNAS.

## **G**IANTYRE TIRE (SHENZHEN)

Giantyre Co., Ltd is established at 2006, specializing in the tire production and sales. Our products include the PCR, TBR, AG, and Motorcycle tires. With a good R&D team and the advanced equipments, Giantyre Co., LTD can supply variety tire products and meet different customers' demand.



With the marketing development, we established the Global Sales Division(Shenzhen) to fulfill the requirement of the international market and effectively promote our radial tire products, specializing in **G**IANTYRE tire sales, promoting and services in the global market.





# **G** IANTYRE

*Hold your future*



**GPC-25**

---

**PERFORMANCE**

**TIRES**





### Three longitudinal line main voids

Three longitudinal line main voids not only make the car run excellently in a really straight line, but also channel water away from the tire.

三條縱嚮直綫主溝

不僅保證輪胎優越的直綫行駛能力，而且具有良好的排水行。

### Dense, circumferential and transversal, thick and thin groove

Dense, circumferential and transversal, thick and thin groove spread in the middle of the whole tread to destroy the water film and improve tire's gripping force on wet roads.

密集縱橫的粗細溝槽

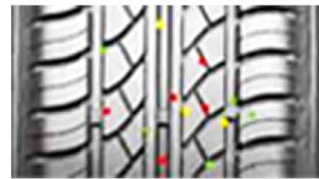
胎面佈滿密集縱橫的粗細溝槽，利于刺破水膜，提高輪胎濕地抓着力。



靜音節距排列

優化的靜音節距設計，有效降低輪胎的共振噪音。

Noiseless pitch arrangement  
The optimized pitch width and arrangement will effectively reduce the Syntonic noise.



先進配方

在耐磨性、抓地力、操控性和安全性能上達到完美結合。

Advance formulation technology  
Abrasion performance, gripping force and safety are totally considered and combined.



寬胎肩設計

有效防止兩肩偏磨，提高輪胎轉嚮性能和磨耗性能。

Wider-shoulder design  
Wider-shoulder will prevent two Shoulders from getting asymmetrically Worn and improve the cornering and wear-resisting performance.



高模低收縮聚酯簾綫

高模低收縮聚酯簾綫的使用，大大提高了胎體的穩定性。

High-density low shrinkage Polyester cord used  
This cord improves the stability of the casing.

### The technological parameter of each tyre size

Size	Pattern	Load	Speed	Tread depth (mm)	Out diameter (mm)	Max air pressure (kpa)	3D index
145/70R12	GPC-25	69	T	8.0	507	250	380AA
155/70R12	GPC-25	73	T	8.0	520	300	380AA
155/65R13	GPC-25	73	T	8.0	532	300	380AA
155/70R13	GPC-25	79	T	8.0	548	340	380AA
155/80R13	GPC-25	79	T	8.0	578	300	380AA
165/65R13	GPC-25	77	T	8.0	544	300	380AA
165/70R13	GPC-25	79	T	8.0	562	300	380AA
165/80R13	GPC-25	83	T	8.0	594	300	380AA
165/70R14	GPC-25	81	T	8.0	588	300	380AA
175/70R13	GPC-25	82	T	8.0	576	300	380AA
175/65R14	GPC-25	82	H	8.0	584	300	380AA
175/70R14	GPC-25	84	T	8.0	602	300	380AA
185/70R13	GPC-25	86	T	8.0	590	300	380AA
185/70R14	GPC-25	88	H	8.0	616	300	380AA
185/60R14	GPC-25	82	H	8.0	578	300	380AA
185/65R14	GPC-25	86	H/T	8.0	596	300	380AA
195/60R14	GPC-25	86	H	8.0	590	300	380AA
195/70R14	GPC-25	91	H	8.0	630	300	380AA

# **G**IAN'TYRE

*Hold your future*



## **GPC-62**

## **PERFORMANCE**

## **TIRES**





### Four longitudinal line main voids

Four longitudinal line main voids not only make the car run excellently in a really straight line, but also channel water away from the tire.

四條縱向直線主溝

不僅保證優越的直線行駛能力，而且具有良好的排水性能。

### Dense, circumferential and transversal, thick and thin groove

Dense, circumferential and transversal, thick and thin groove spread in the middle of the whole tread to destroy the water film and

improve tire's gripping force on wet roads.

密集縱橫的粗細溝槽

胎面佈滿縱橫密集溝槽，從而破壞水膜，提高輪胎濕地抓著力。

### Anti-skidding all-weather wee groove

All-weather sheets of copper spreading over the whole tread ensure the stability of tires in different conditions, enhance the heat dissipation of every pattern, and meanwhile improve acceleration of starting and brake.

防滑全天候細小溝槽

胎面佈滿防滑全天候銅片，確保不同環境下的行駛穩定性，良好的散熱性和優異的制動性。



Noiseless pitch arrangement  
The optimized pitch width and Arrangement will effectively reduce the Syntonic noise.

靜音節距排列

優化的靜音節距設計，有效降低輪胎的共振噪音。



Advance formulation technology  
Abrasion performance, gripping force and safety are totally considered and combined.

先進配方

在耐磨性、抓地力、操控性和安全性能上達到完美結合。



Wider-shoulder design  
Wider-shoulder will prevent two Shoulders from getting asymmetrically Worn and improve the cornering and wear-resisting performance.

寬胎肩設計

防止胎肩偏磨，提高輪胎轉向和磨耗性能。



High-density low shrinkage  
Polyester cord used This cord improves the stability of the casing.

高模低收聚酯簾線

高模低收聚酯簾線的使用，有效提高了胎體的穩定性。

### The technological parameter of each tyre size

Size	Pattern	Load	Speed	Tread depth (mm)	Out diameter (mm)	Max air pressure (kpa)	3D index
185/65R15	GPC-62	69	T	8.0	250	250	380AA
195/65R15	GPC-62	73	T	8.0	300	300	380AA
195/55R15	GPC-62	73	T	8.0	300	300	380AA
195/60R15	GPC-62	79	T	8.0	340	340	380AA
205/65R15	GPC-62	79	T	8.0	300	300	380AA
225/50R16	GPC-62	77	T	8.0	300	300	380AA
225/55R16	GPC-62	79	T	8.0	300	300	380AA
205/60R15	GPC-62	91	H	8.0	627	842	380AA
215/65R16	GPC-62	98	H	8.0	686	769	380AA
205/55R16	GPC-62	90	V	8.0	632	835	380AA
215/55R16	GPC-62	93	V	8.0	642	822	380AA



# GIANTYRE

*Hold your future*



## GU-75

### Four longitudinal line main voids

Four longitudinal line main voids not only make the car run excellently in a really straight line, but also channel water away from the tire.

四條縱向直線主溝

不僅保證輪胎優越的直線行駛能力，而且具有良好的排水性能。

### Transverse rain grooves

The transverse rain grooves are designed to actively pump water out from under the tire and improve the hydroplaning performance.

橫向排水溝槽

進一步提高輪胎的排水能力，從而提高輪胎的抗濕滑性能。

### Transverse grooves and steel tapes designed

Transverse steel tapes and grooves are cut across the tire tread, usually perpendicular to the grooves, which provide better gripping performance; moreover, the transverse steel tapes effectively destroy the water film and remarkably improve wet gripping force.

橫向溝槽及鋼片設計

使輪胎具有良好的抓地性能，橫向鋼片設計能有效破除水膜，濕地抓著力顯著提升。



## UHP TIRES





**Noiseless pitch arrangement**  
The optimized pitch width and Arrangement will effectively reduce the Syntonic noise.

**靜音節距排列**

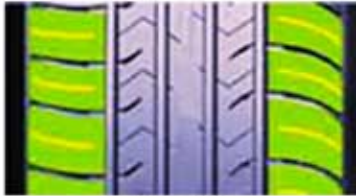
優化的靜音節距設計，有效降低輪胎的共振噪音。



**Advance formulation technology** Abrasion performance, gripping force and safety are totally considered and combined.

**先進配方**

在耐磨性、抓地力、操控性和安全性能上達到完美結合。



**Wider-shoulder design**  
Wider-shoulder will prevent two Shoulders from getting asymmetrically Worn and improve the cornering and wear-resisting performance.

**寬胎肩設計**

有效防止胎肩偏磨，提高輪胎轉向性能和磨耗性能。



**High-density low shrinkage Polyester cord** used This cord improves the stability of the casing.

**高模低收縮聚酯簾綫**

高模低收縮聚酯簾綫的使用，大大提高了胎體的穩定性。

**The technological parameter of each tyre size**

Size	Pattern	Load	Speed	Tread depth (mm)	Out diameter (mm)	Max air pressure (kpa)	3D index
185/80R14	GU-75	91	T	8.0	652	809	380AA
225/75R15	GU-75	102	S	8.3	719	734	380AA
185/70R13	GU-75	86	T	8.0	590	894	380AA
185/70R14	GU-75	88	T	8.0	616	857	380AA
195/70R14	GU-75	91	H	8.0	630	838	380AA
205/70R14XL	GU-75	98	H	8.0	644	819	380AA
215/70R15	GU-75	98	H/T	8.0	683	773	380AA
235/60R16	GU-75	100	V/H	8.3	688	767	380AA
185/65R14	GU-75	86	H/T	8.0	596	885	380AA
185/65R15	GU-75	88	H/T	8.0	621	850	380AA
195/65R15	GU-75	91	V/H	8.0	635	831	380AA
205/65R15	GU-75	94	H	8.0	647	816	380AA
215/65R15	GU-75	96	H	8.0	661	798	380AA
215/65R16	GU-75	98	H	8.0	686	769	380AA
185/60R14	GU-75	82	H	8.0	578	913	380AA
195/60R14	GU-75	86	H	8.0	590	894	380AA
185/60R15	GU-75	84	H/T	8.0	603	875	380AA
195/60R15	GU-75	88	V/H	8.0	615	858	380AA
205/60R15	GU-75	91	V	8.0	627	842	380AA
195/60R16	GU-75	89	H	8.0	640	824	380AA
205/60R16	GU-75	92	V/H	8.0	652	809	380AA
215/60R16	GU-75	95	V/H	8.0	664	795	380AA
225/60R16	GU-75	98	H	8.0	676	781	380AA
185/55R14	GU-75	80	H	8.0	560	942	380AA
185/55R15	GU-75	82	H	8.0	585	902	380AA
195/55R15	GU-75	85	V	8.0	595	887	380AA
205/55R16	GU-75	91	W	8.0	632	835	380AA
215/55R16XL	GU-75	97	W	8.0	642	822	380AA
225/55R16XL	GU-75	99	W	8.0	654	807	380AA
195/50R15	GU-75	82	V	8.0	577	914	320AA
205/50R16	GU-75	87	W	8.0	612	862	320AA
225/50R16	GU-75	92	W	8.0	632	835	320AA
205/45R16XL	GU-75	87	W	8.0	590	894	320AA



# GIANTTYRE

*Hold your future*

## GU-95



### Four longitudinal line main voids

Four longitudinal line main voids not only make the car run excellently in a really straight line, but also channel water away from the tire.

四條闊直排水溝槽設計

提供優異的排水性能，確保濕滑路面的駕駛穩定性，并具有優異的直線行駛性能。

### Transverse rain grooves

The transverse rain grooves are designed to actively pump water out from under the tire and improve the hydroplaning performance.

橫向排水溝槽

進一步提高輪胎的排水能力，提高抗濕滑性，兼具散熱性。

## UHP TIRES



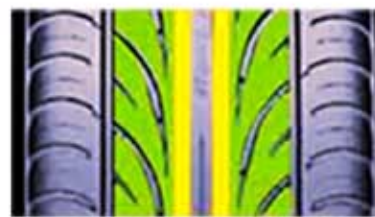




Noiseless pitch arrangement The optimized pitch width and arrangement will effectively reduce the syntonistic noise.

**靜音節距排列**

優化的靜音節距設計，有效降低的降低輪胎的共振噪音。



Single-direction steering performance Single-direction main void provides perfect high speed performance, proper balance performance, fuel economy, gripping

**單導向操控性**

提供極佳的高速性、理想的平衡性、節油經濟型、牽引性和舒適性。

performance and comfortability.



Wider-shoulder design Wider-shoulder will prevent two Shoulders from getting asymmetrically Worn and improve the cornering and wear-resisting performance.

**寬胎肩設計**

有效防止兩肩偏磨，提高輪胎轉彎性能和磨耗性能。



Silent side wall used at central main void Silent knurling line is designed at the side wall of central main void, which disturbs the noise frequency passing through main void and reduce the noise.

**中心主溝靜音側壁**

主溝加靜音滾花線紋設計，有效擾亂通過主溝的噪音頻率，降低噪音。

**The technological parameter of each tyre size**

Size	Pattern	Load	Speed	Tread depth (mm)	Out diameter (mm)	Max air pressure (kpa)	3D index
215/55ZR17	GU-95	94	W	8.0	668	300	320AA
225/55ZR17XL	GU-95	101	W	8.0	680	340	320AA
235/55R17	GU-95	99	V	8.0	690	300	320AA
235/55R18XL	GU-95	104	V	8.0	715	340	320AA
205/50ZR17XL	GU-95	93	W	8.0	638	340	320AA
225/50ZR17XL	GU-95	98	W	8.0	658	340	320AA
245/50ZR18	GU-95	100	W	8.0	703	300	320AA
255/50ZR19	GU-95	103	W	8.0	739	300	320AA
265/50R20XL	GU-95	111	V	8.0	774	340	320AA
275/50R20	GU-95	109	W	8.0	784	200	320AA
285/50R20XL	GU-95	116	V	8.0	794	340	320AA
205/45ZR17XL	GU-95	88	W	8.0	616	340	320AA
215/45ZR17XL	GU-95	91	W	8.0	626	340	320AA
225/45ZR17XL	GU-95	94	W	8.0	634	340	320AA
235/45ZR17XL	GU-95	97	W	8.0	644	340	320AA
245/45ZR17	GU-95	95	W	8.0	652	300	320AA
225/45ZR18XL	GU-95	95	W	8.0	659	340	320AA
245/45ZR18XL	GU-95	100	Y	8.0	677	340	320AA
255/45ZR18	GU-95	99	W	8.0	687	300	320AA
245/45ZR19	GU-95	98	Y	8.0	703	300	320AA
275/45ZR20XL	GU-95	110	V	8.0	756	340	320AA
295/45ZR20XL	GU-95	114	V	8.0	774	340	320AA
205/40ZR17XL	GU-95	84	W	8.0	596	340	320AA
215/40ZR17XL	GU-95	87	W	8.0	604	340	320AA
245/40ZR17XL	GU-95	95	W	8.0	628	340	320AA
225/40ZR18XL	GU-95	92	W	8.0	637	340	320AA
235/40ZR18XL	GU-95	95	W	8.0	645	340	320AA
245/40ZR18XL	GU-95	97	W	8.0	653	340	320AA
275/40ZR20XL	GU-95	106	W	8.0	728	340	320AA
215/35ZR18XL	GU-95	84	W	8.0	607	340	320AA
265/35ZR18XL	GU-95	97	W	8.0	643	340	320AA
235/35ZR19XL	GU-95	91	W	8.0	647	340	320AA
245/35ZR19XL	GU-95	93	W	8.0	655	340	320AA
225/35ZR20XL	GU-95	90	W	8.0	666	340	320AA
235/35ZR20XL	GU-95	92	W	8.0	672	340	320AA
245/35ZR20XL	GU-95	95	W	8.0	680	340	320AA
255/35ZR20XL	GU-95	97	W	8.0	686	340	320AA
315/35ZR20XL	GU-95	110	W	8.0	728	340	320AA
265/30ZR19XL	GU-95	93	W	8.0	643	340	320AA
225/30ZR20XL	GU-95	85	W	8.0	644	340	320AA
245/30ZR20XL	GU-95	90	W	8.0	656	340	320AA

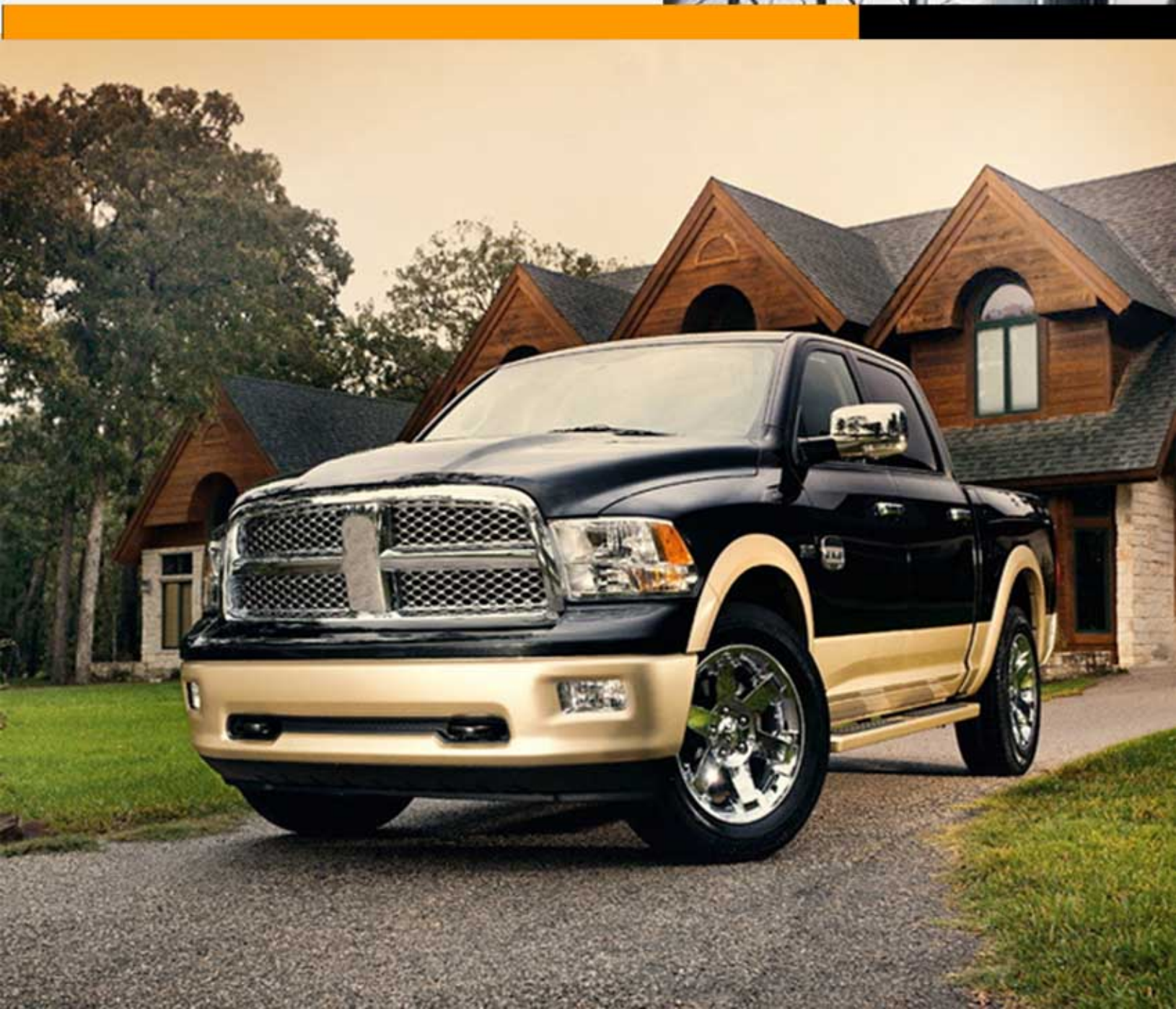


# **G** IANTYRE

*Hold your future*

## **GV-128**

## **VAN TIRES**







### Straight-line main tread voids and two cured main tread voids

The main tread voids is not only design element specifically arranged to channel water away from the tire, but to ensure the wet gripping

performance.

直線主溝及兩條曲折主溝

在增加輪胎排水性的同時，又保證了輪胎的牽引性，提高輪胎的抗濕滑性。

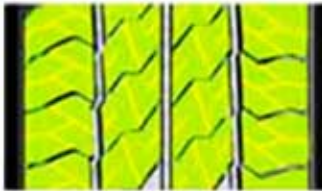
### Crisscrossed steel tapes embedded in the rubber

The steel tapes provide higher gripping performance and improve the

braking performance of the tire.

鋼片縱橫交錯的

增強輪胎的抓地力，提高輪胎的制動剎車性能，且有利於花紋塊的散熱。

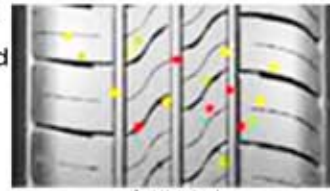


Noiseless pitch arrangement

The optimized pitch width and Arrangement will effectively reduce the Syntonic noise.

靜音節距排列

優化的靜音節距設計，有效降低輪胎的共振噪音。



Advance formulation technology

Abrasion performance, gripping force and safety are totally considered and combined.

先進配方

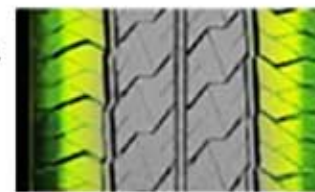
在耐磨性、抓地力、操控性和安全性能上達到完美結合。



Carcass strengthened design to meet the load requirements of commercial vehicles, to reduce shoulder shock effectively, and to ensure excellent security.

胎體強化設計

滿足商務車荷載要求，並有效降低肩震，確保優異的安全性。



Wider-shoulder design

Wider-shoulder will prevent two Shoulders from getting asymmetrically Worn and improve the cornering and wear-resisting performance.

寬胎肩設計

有效防止胎肩偏磨，提高輪胎轉向性能和磨耗性能。

### The technological parameter of each tyre size

Size	Pattern	Load	Speed	Tread depth (mm)	Out diameter (mm)	Max air pressure (kpa)
215/75R15C	GV-128	106/103	R	13.0	703	450
235/75R15C	GV-128	110/107	R	13.0	733	450
185/75R16C	GV-128	104/102	S	11.7	684	475
215/75R16C	GV-128	113/111	S	13.0	728	475
195/70R15C	GV-128	104/102	S	9.0	655	450
205/70R15C	GV-128	106/104	S	13.0	669	450
215/70R15C	GV-128	109/107	R	13.0	683	450
225/70R15C	GV-128	112/110	S	13.0	697	450
225/70R16C	GV-128	102/99	R	13.0	722	350
205/65R15C	GV-128	102/100	T	13.0	647	375
195/65R16C	GV-128	104/102	T	11.7	660	475
205/65R16C	GV-128	107/105	T	13.0	672	475
215/65R16C	GV-128	109/107	T	13.0	686	475
225/65R16C	GV-128	112/110	T	13.0	698	475
235/65R16C	GV-128	115/113	T	13.0	712	475
LT215/85R16 10PR	GV-128	115/112	Q	13.5	772	550
LT235/85R16 10PR	GV-128	120/116	Q	13.5	806	550
LT225/75R15 6PR	GV-128	102/99	T/S	13.0	719	350
LT225/75R16 10PR	GV-128	115/112	Q	13.0	744	550



# **G** IANTYRE

*Hold your future*

**GS-66**

**SUV TIRES**







### Noiseless pitch arrangement

The optimized pitch width and arrangement will effectively

reduce the Syntonic noise.

靜音節距排列

優化的靜音節距設計，有效降低輪胎的共振噪音。

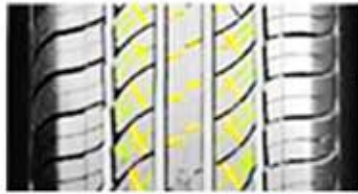
### Two straight-line main tread voids and two cured main tread voids

Two straight-line main tread voids are not only design element specifically arranged to ensure the wheel alignment, but also channel water away from the tire.

Two cured main tread voids are not only designed to channel water away from the tire, but also provide sufficient gripping force.

兩條直線主溝及兩條曲折主溝

優異的排水和直線行駛性能，曲折主溝提高排水性同時，確保充足的抓地力。



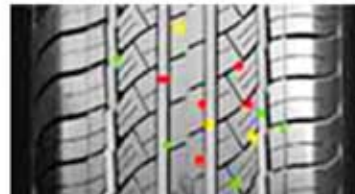
Crisscrossed steel tapes Embedded in the rubber

The steel tapes provide higher gripping Performance and improve the

縱橫交錯的鋼片

增強輪胎抓地力和制動剎車性能。

braking performance of the tire.

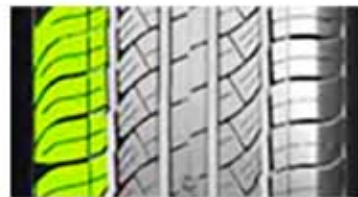


Advance formulation technology

Abrasion performance, gripping force and safety are totally considered and combined.

先進配方

在耐磨性、抓地力、操控性和安全性能上達到完美結合。



Wider-shoulder design  
Wider-shoulder will prevent two Shoulders from getting asymmetrically Worn and improve the cornering and wear-resisting performance.

寬胎肩設計

有效防止胎肩偏磨，提高輪胎轉向性能和磨耗性能。



High-density low shrinkage Polyester cord used This cord improves the stability of the casing.

高模低收縮聚酯簾綫

高模低收縮聚酯簾綫的使用，大大提高了胎體的穩定性。

### The technological parameter of each tyre size

Size	Pattern	Load	Speed	Tread depth (mm)	Out diameter (mm)	Max air pressure (kpa)	3D index
245/75R16	GS-66	111	S	8.3	774	300	380AA
LT245/75R16	GS-66	120/116	Q	10.3	774	550	
LT265/75R16	GS-66	123/120	Q	10.3	806	550	
235/70R16	GS-66	106	T	8.3	736	300	380AA
245/70R16XL	GS-66	111	S/T	8.3	750	340	380AA
265/70R16	GS-66	112	T/H	8.3	778	300	380AA
275/70R16	GS-66	114	S	8.3	792	300	380AA
225/65R17	GS-66	102	H	8.3	724	300	380AA
235/65R17XL	GS-66	108	H	8.3	738	340	380AA
265/65R17	GS-66	112	H	8.3	776	300	380AA
275/65R17	GS-66	115	T	8.3	790	300	380AA
285/65R17	GS-66	116	V	8.3	802	300	380AA
235/60R16	GS-66	100	V/H	8.3	688	300	380AA
225/60R17	GS-66	99	T	8.3	702	300	380AA
235/60R18XL	GS-66	107	V	8.3	739	340	380AA
265/60R18	GS-66	110	V	8.3	775	300	380AA
285/60R18XL	GS-66	120	V	8.3	799	340	380AA
255/55ZR18XL	GS-66	109	W/Y	8.3	737	340	320AA
275/55R20XL	GS-66	117	V	8.3	810	340	320AA
275/45R19XL	GS-66	108	Y	8.3	731	340	320AA





## HR556

# GIANTTYRE

*Hold your future*

The technological parameter of each tyre size

Size	Ply Rating	Rim	Load Index	Speed Rating	Pressure		Tread Depth (mm)
					Kpa	Psi	
155R13LT	8PR	4.50B	90/88	Q	450	65	8
165/70R13C	6PR	5.00B	88/86	Q	375	54	8
165R13C	8PR	4.50B	94/93	Q	450	65	8
175R13LT	8PR	5.00B	92/90	Q	450	65	8
175/70R14LT	6PR	5J	95/93	S	375	54	7.7
175R14C	8PR	5J	99/97	Q	450	65	8



## HR566

The technological parameter of each tyre size

Size	Ply Rating	Rim	Load Index	Speed Rating	Pressure		Tread Depth (mm)
					Kpa	Psi	
185R14C	8PR	5 1/2J	90/88	Q	450	65	8.7
195R14C	8PR	5 1/2J	105/103	Q	450	65	9
195R15C	8PR	5 1/2J	106/104	Q	450	65	9



## BW280

The technological parameter of each tyre size

Size	Ply Rating	Rim	Load Index	Speed Rating	Pressure		Tread Depth (mm)
					Kpa	Psi	
175/70R13		5J	82	T	300	44	7.5



## HR568

The technological parameter of each tyre size

Size	Ply Rating	Rim	Load Index	Speed Rating	Pressure		Tread Depth (mm)
					Kpa	Psi	
6.50R16LT	10PR	5.50F	107/102	Q	560	81	9
7.00R16LT	10PR	5.50F	111/107	Q	560	81	9
7.00R16LT	12PR	5.50F	115/112	Q	670	97	9



*Hold your future*

## Giantyre Tire

Global Sales Division(Shen Zhen)

Add: 20th Floor, ZhongCheng Sports Building, No. 2008,  
West SunGang Road, ShenZhen City, GuangDong  
Province,China.

Tel: (+86) (755) 8332 2665 Fax: (+86) (755) 8324 0758

地址： 深圳市福田區笋崗西路2008號中成體育大廈20層

電話： (0755) 8332 2665 傳真： (0755) 8324 0756

[www.giantyre.com](http://www.giantyre.com)